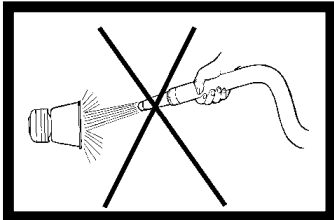


# ELEKTRONISCHE SIRENE

## AS-422/6S CH5 ( SCHWEIZ. 5 )

# AS-422/6S CH5 (Ref:2020141CH5)

## D FUNKTIONSBESCHREIBUNG



(\*SCHALTPLAN IN DIE MONTAGE-UND BEDIENUNGSANLEITUNG)

SCHALTET ALLE FUNKTIONEN AB

**GEDRÜCKTHALTEN (ON-OFF)**

bla bla bla

**VOL**

bla bla bla

**RUNDUMKENNLEUCHTEN (ON-OFF)**

1°  
1B ON  
2B ON  
4A ON

**2°**

1B OFF  
2B OFF  
4A OFF

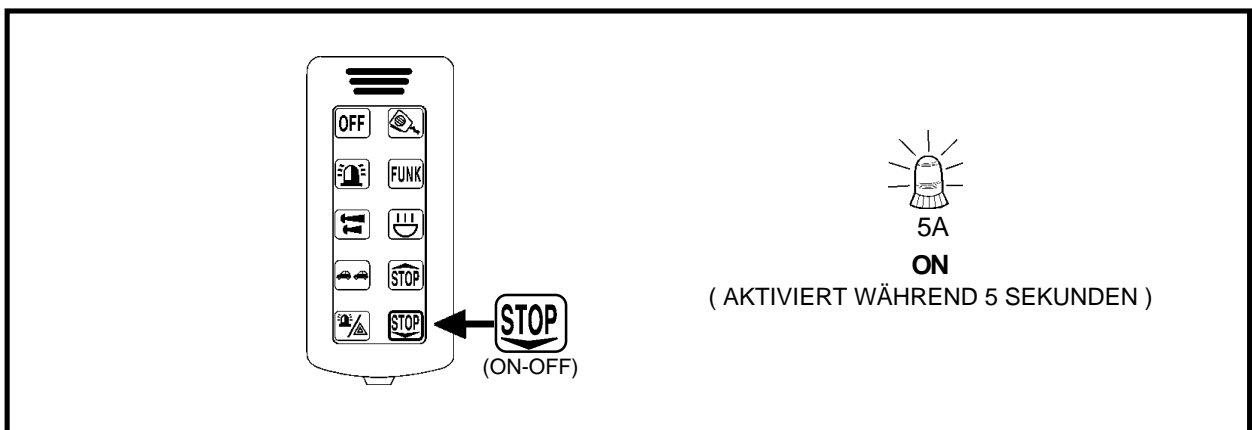
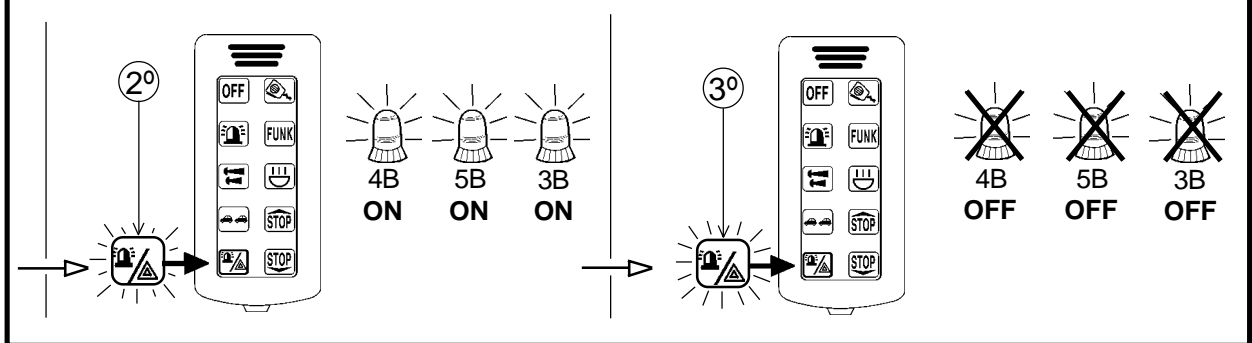
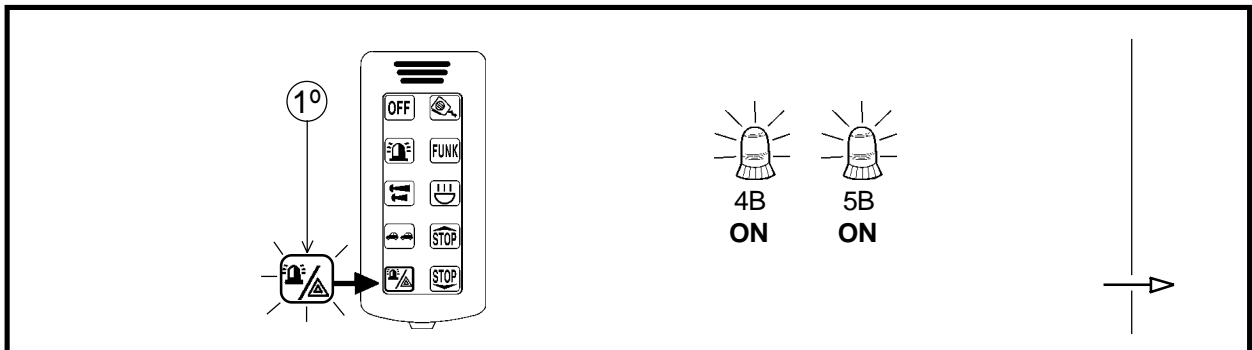
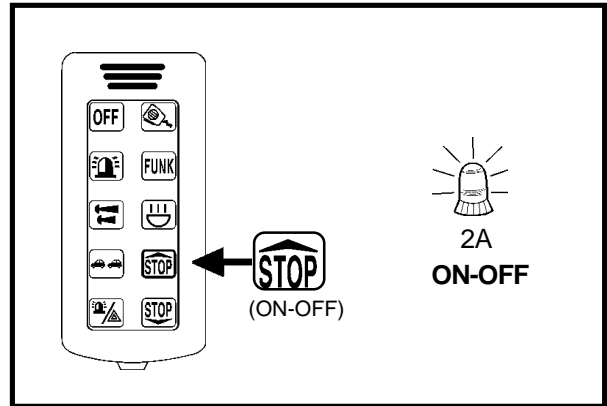
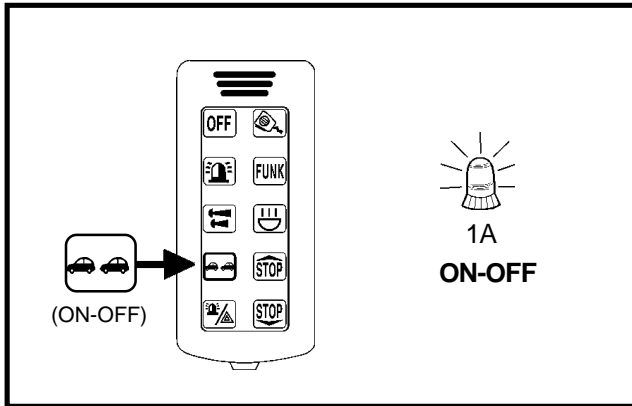
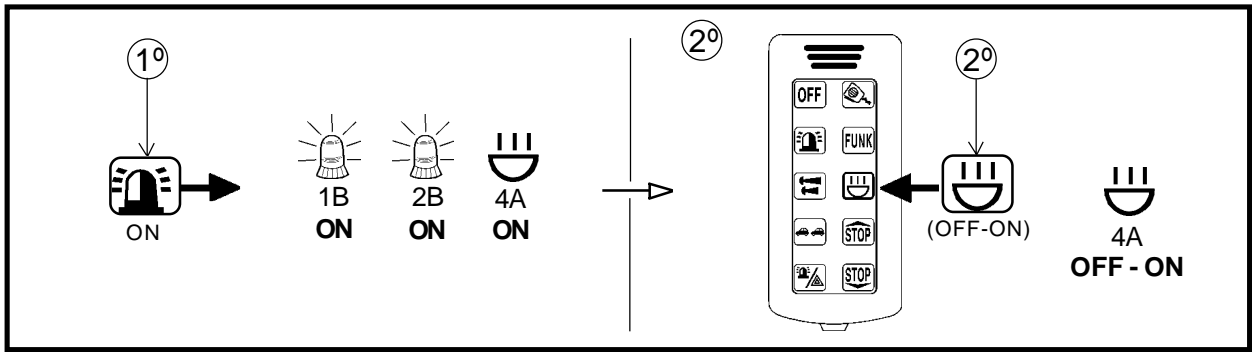
**FUNK (ON-OFF)**

bla bla

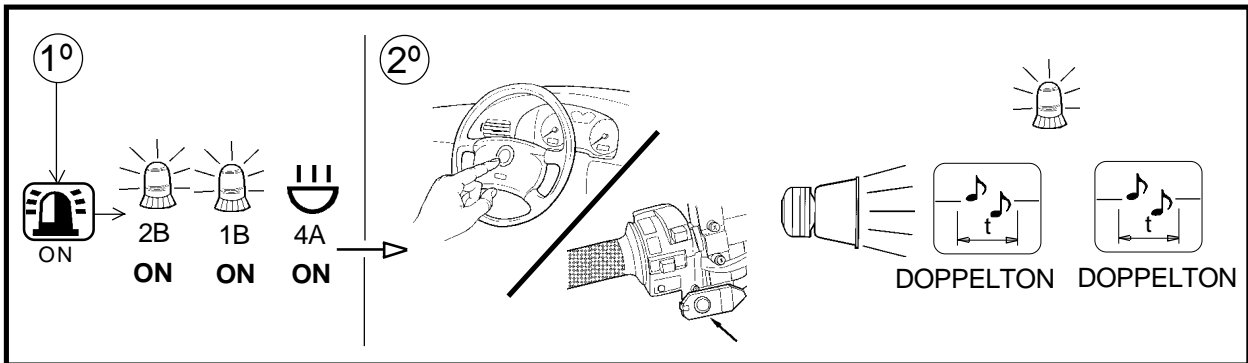
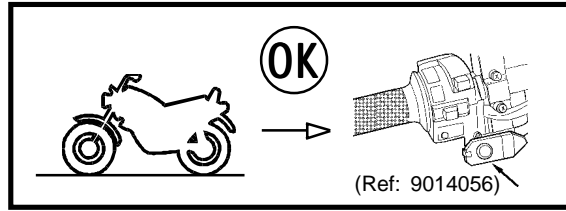
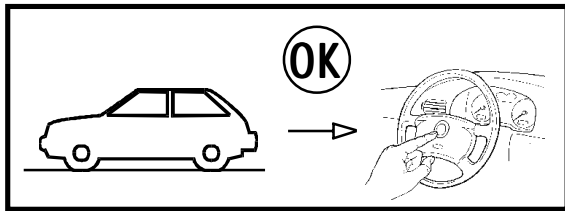
**SIRENE (ON-OFF)**

1B ON  
2B ON  
4A ON

**DOPPELTON**  
(f=450-600Hz 40c/min.)



**D SIRENENSTEUERUNG ÜBER HUPE (FAHRZEUG)/ODER SCHALTER (MOTORRAD)**



DER ALARM WIRD ABGESCHALTET, WENN EINE EXTERNE VORRICHTUNG EINEN AUSFALL DER LAMPE FESTSTELLT.